

**LabPrints Print2Bind is an album ordering solution customized for each one of our print to bind partners. With LabPrints Print2Bind you can:**

- Quickly and easily import, organize, and manage your images.
- Preview and order all album options and selections that your album partner offers.
- Rapidly build your book using pages you design in LabPrints renowned album design tools, or any other 3rd party design software.
- "Clone" book designs you create to quickly create parent and companion books.
- Upload orders directly to your album partner for printing and binding.

### HOW TO GET LP PRINT2BIND

Go to [http://labprints.com/website/lp\\_print\\_to\\_bind.php](http://labprints.com/website/lp_print_to_bind.php) and download the installer file. Once this is downloaded, double-click on the completed file. This will guide you through each step of the installation process.

### HOW TO USE LABPRINTS PRINT2BIND

Overview:

1. Create a new project and import the images for the album
2. Create a new order
  - a. Choose details for the album
  - b. Design the album layout and pages
3. Review the album layout and details
4. Upload the album to your album company

### CREATE A NEW PROJECT AND IMPORT YOUR IMAGES FOR THE ALBUM

Fig. 1

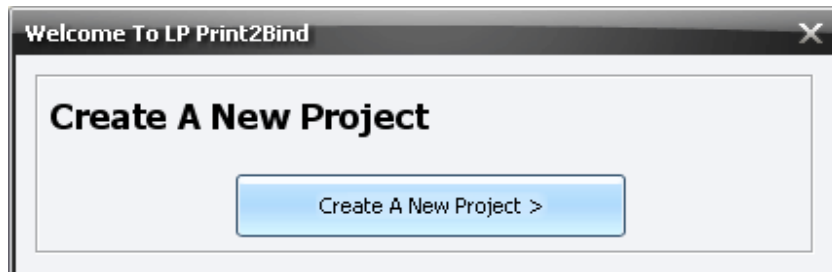


Fig. 2

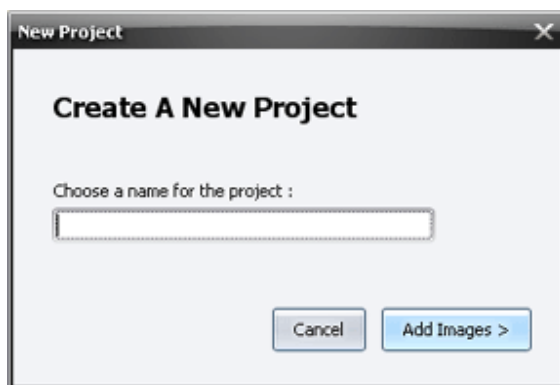
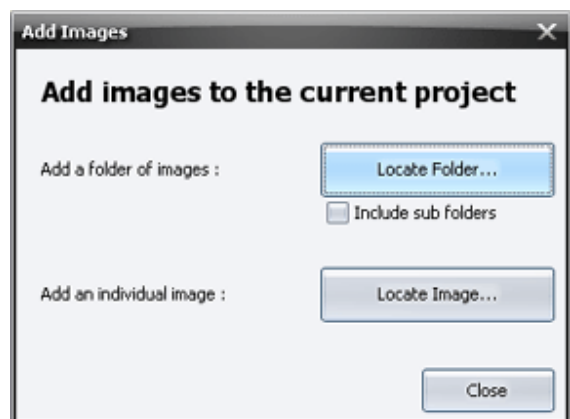
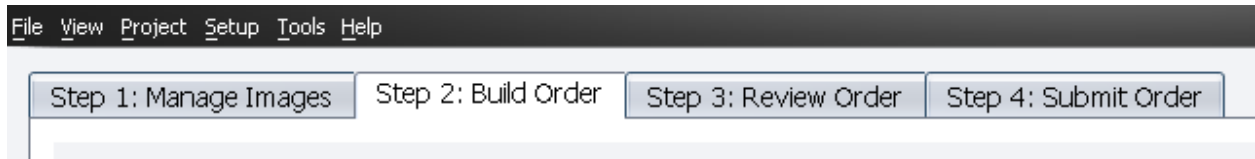


Fig. 3



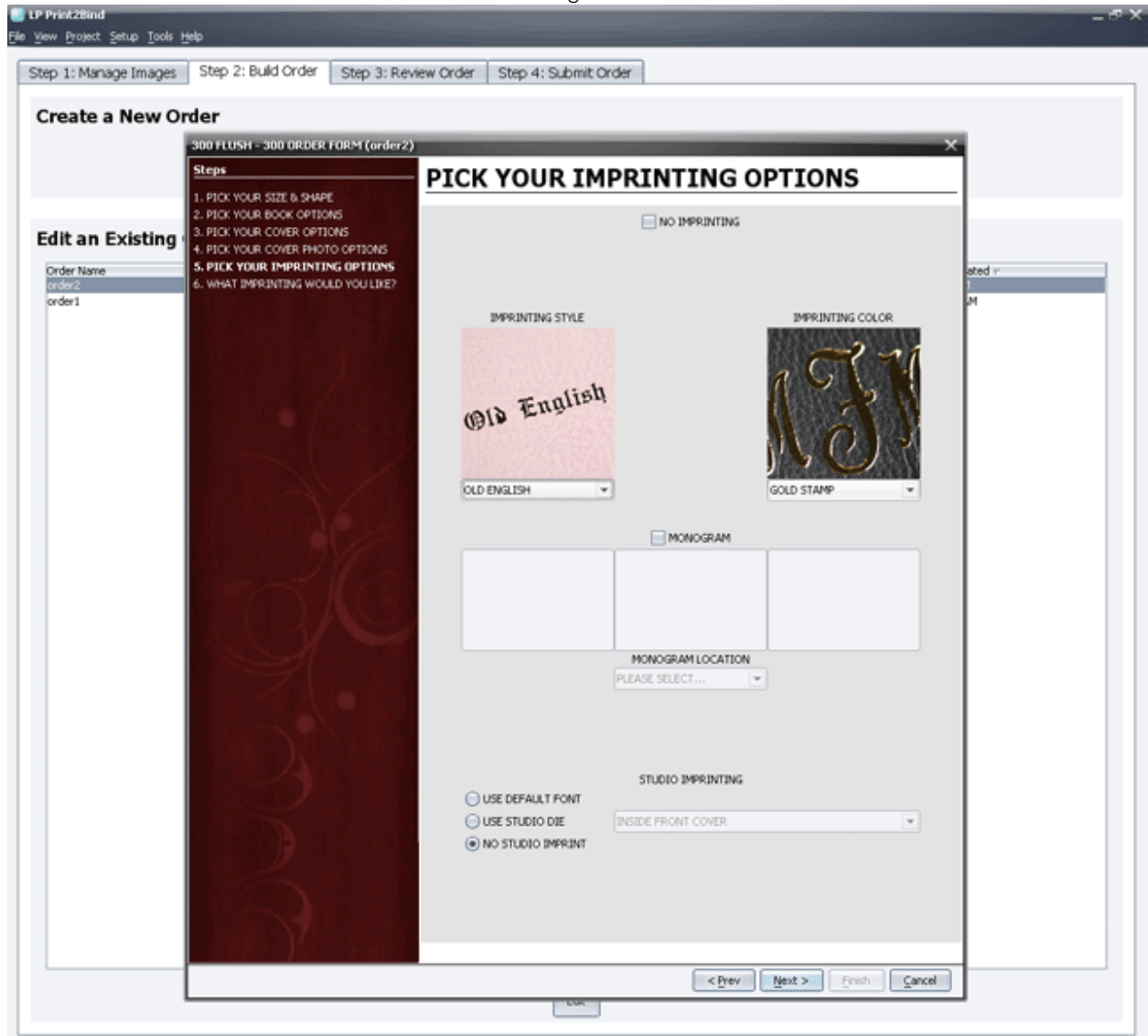
## CREATE A NEW ORDER

Fig. 4



a. Select your album's options. These offers will depend on your album company.

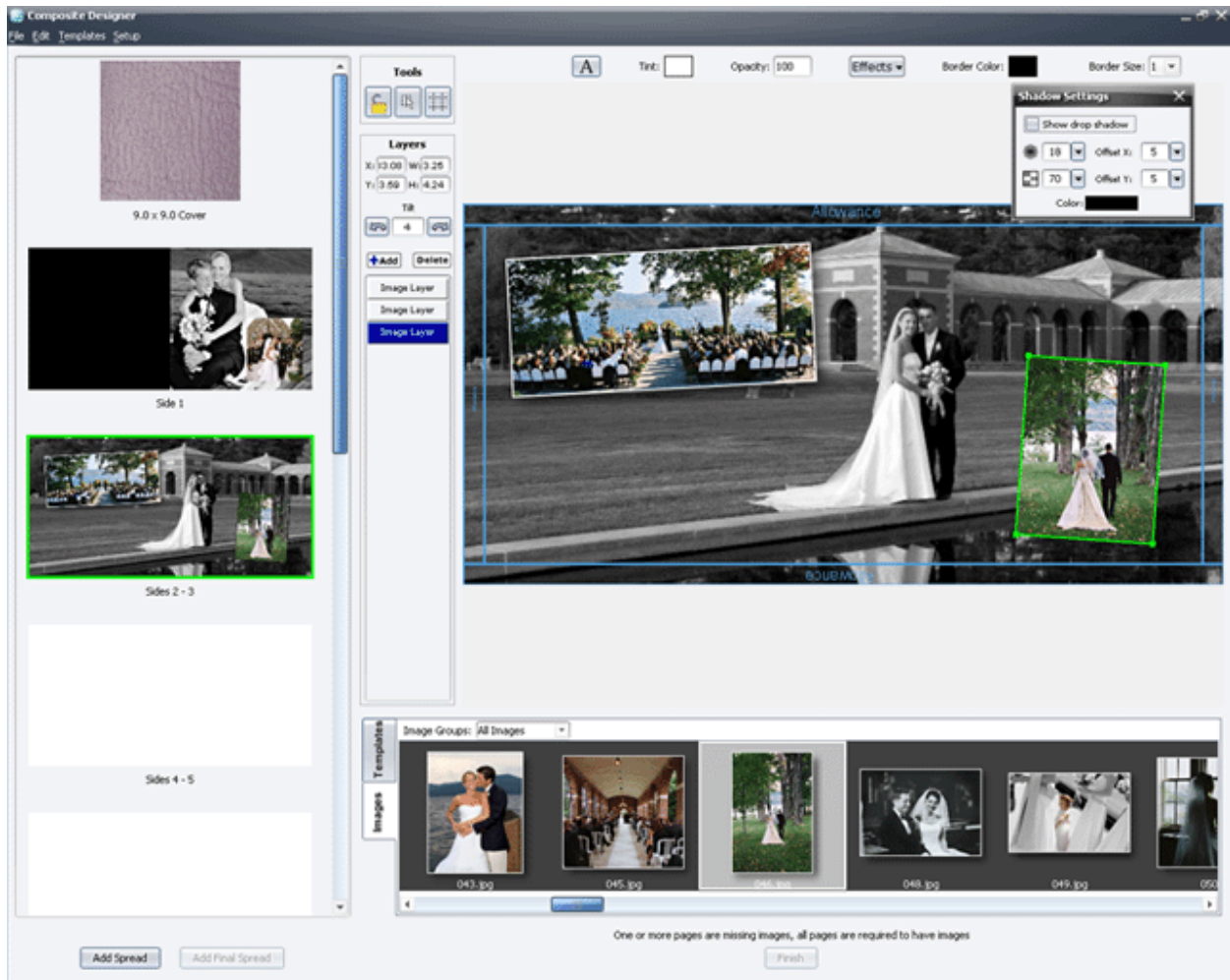
Fig. 5



NOTE: Options shown in this image are for demonstration purposes only, and will vary by product and album company.

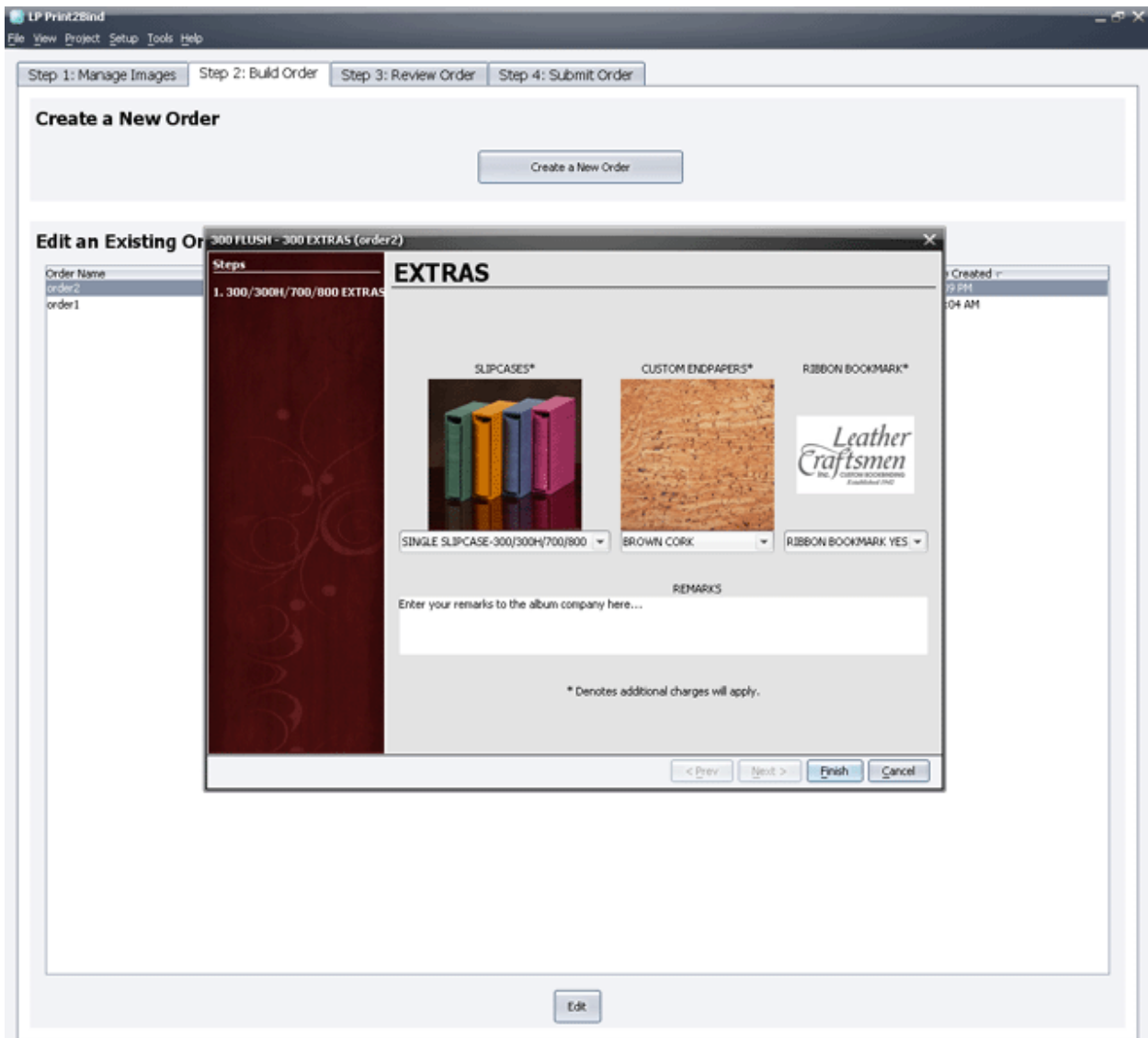
- b. Design your album using your album company's included mats, use included composite layouts, or create your own custom composites for flush albums. You have a number of design tools at your disposal:
- add and remove composite layers
  - precise layer sizing and positioning by coordinates
  - layer filtering by degrees
  - snap-to grid and layer guidelines
  - text editing
  - customize tint, opacity, drop shadow, mask, border color and border size for image layers

Fig. 6



c. Add any extras or special remarks for printing and binding.

Fig. 7



NOTE: Options shown in this image are for demonstration purposes only, and will vary by product and album company.

## REVIEW YOUR ALBUM LAYOUT AND DETAILS

Here you can view your entire album order, with or without a detailed report. You can also print the summary for your files, or to preview for your client.

Fig. 8

LP Print2Bind

File View Project Setup Tools Help

Step 1: Manage Images Step 2: Build Order Step 3: Review Order Step 4: Submit Order

### Review an Order

Order Name	Order Type	Complete	Date & Time Created
order2	300 FLUSH	No	9/14/09 1:09 PM
order1	3500 FLUSH	Yes	9/14/09 10:04 AM

Report Type: Detailed

Print Summary

[Need a way to save a PDF?](#)

3

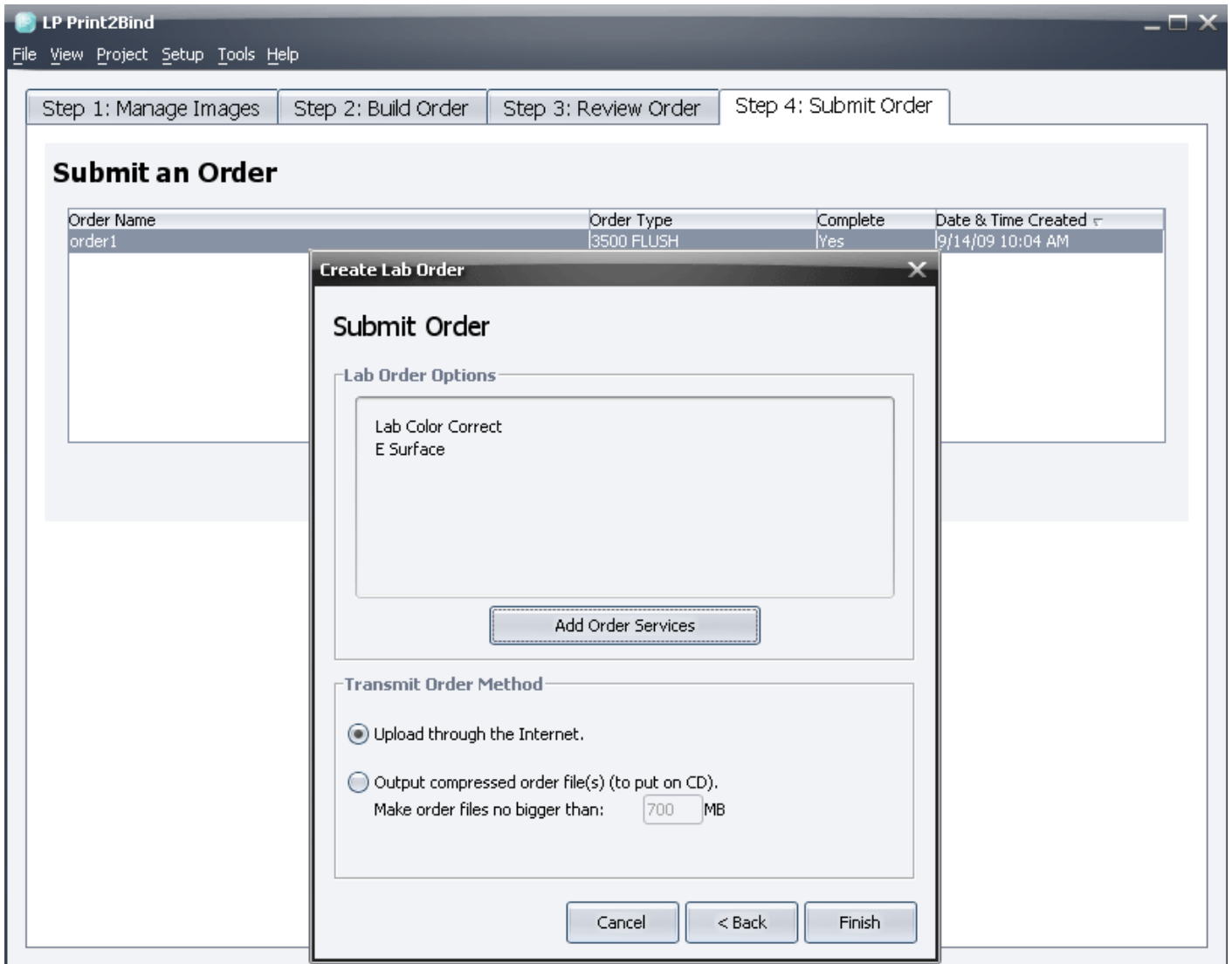
Sides 2 - 3 9x18 1

4

Sides 4 - 5 9x18 1

UPLOAD THE ORDER TO YOUR ALBUM COMPANY THROUGH LP PRINT2BIND

Fig.9

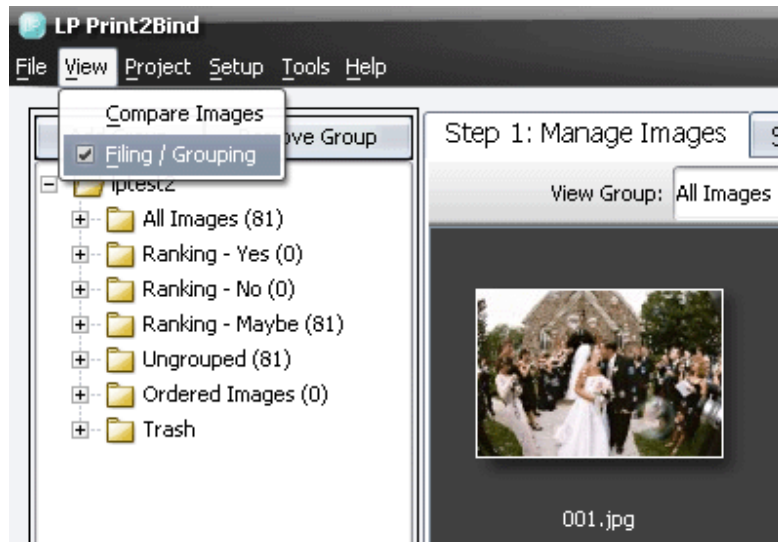


## TIPS & TRICKS

### ORGANIZE YOUR IMAGES IN THE LIGHT TABLE

Once you've imported your images to the Light Table, you can click and drag any of those images to change their order. Use the menu option **View > Filing / Grouping** to open up the Filing and Grouping sidebar. Here you can create new groups and drag your images into different groups to keep your event and album organized.

Fig. 10



### RESUME AN ALBUM THAT YOU STARTED PREVIOUSLY

On the Build Order tab, select your order, then click the Edit button at the bottom of the window. You will be prompted to select which stage of the album you'd like to edit: Order Form, Design, or Extras.

Fig. 11

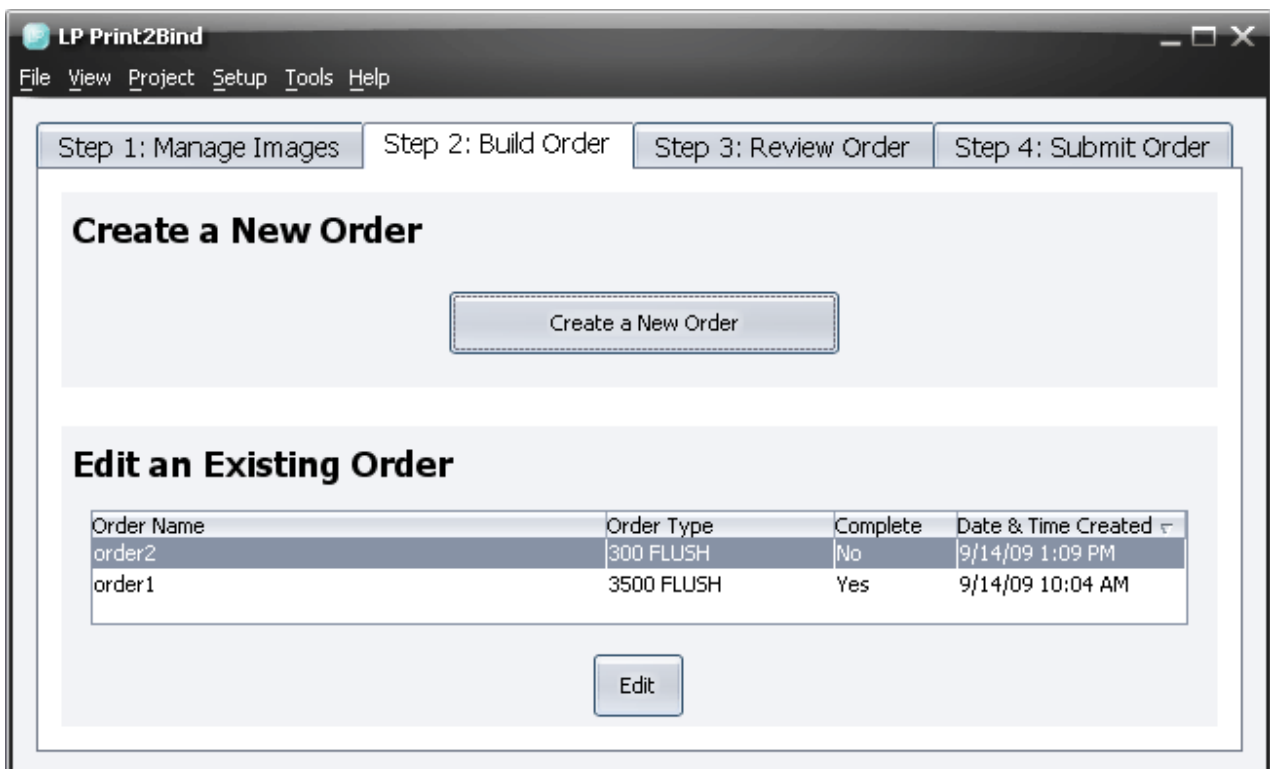
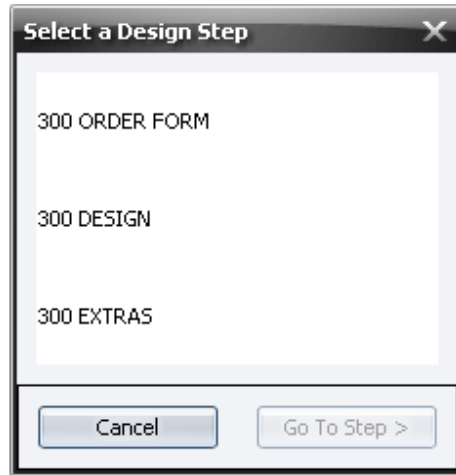




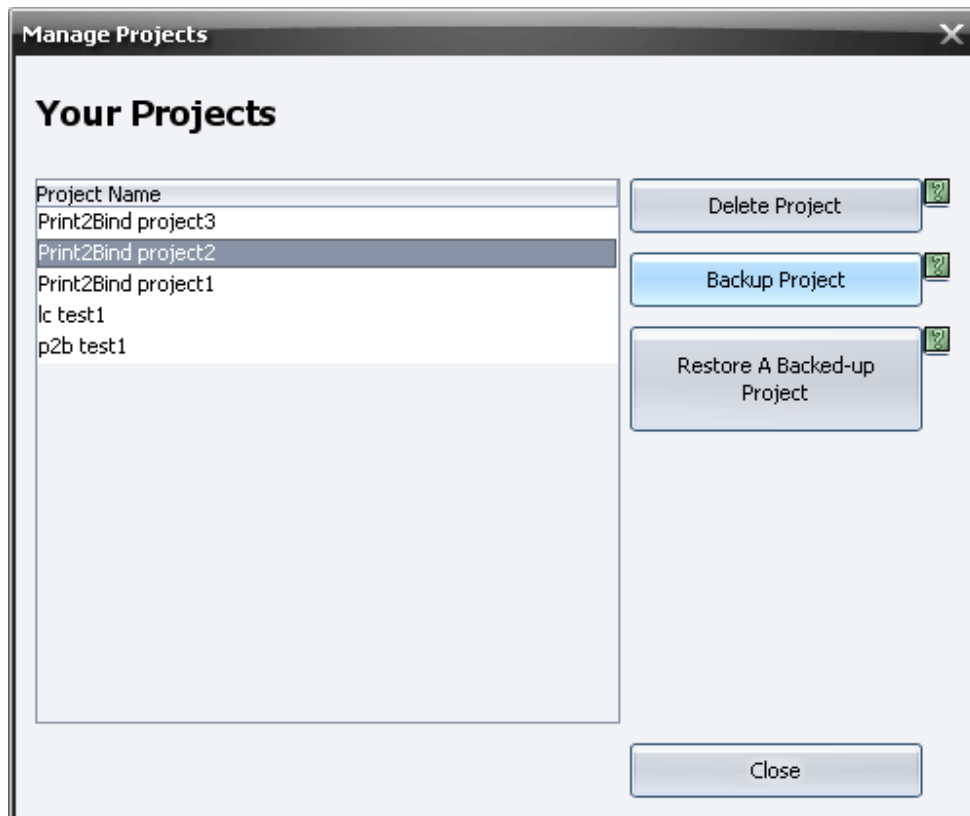
Fig. 12



## MANAGE YOUR PROJECTS

You can back up your projects and save them on external hard drives, or take them on the road using your laptop or USB flash drive. To do this, use the menu option **File > Manage Projects**. Select the project you want to back up, then click Backup Project. This will create a file named [ProjectName].backup, which contains all the information regarding your orders and album designs, groups and images.

Fig. 13



To restore a backed up project, open LP Print2Bind and go to **File > Manage Projects** again. This time, click Restore a Backed-up Project. Locate the .backup file that you created and click Restore. This will create a copy of the backed-up project in LP Print2Bind. You can open and edit this new copy from **File > Open Project**.

Please note that a project backup does not contain your original high resolution image files. While you can still edit your project and create albums and composites, you will need access to these high resolution files when you send a LabPrints Print2Bind order to your lab.



Please see our Knowledgebase article <http://www.labprints.com/page.php?id=118>  
This will guide you through relinking your files if you have restored your project on another computer.